

Institution Code: **STM**



# St. Thomas College of Engineering & Technology

SIVAPURAM, MATTANUR, KANNUR DIST

Approved by A.I.C.T.E., Govt. of Kerala &  
Affiliated to APJ Abdul Kalam Technological University



## B-TECH DEGREE COURSES

- COMPUTER SCIENCE AND ENGINEERING ●
- COMPUTER SCIENCE AND ENGINEERING  
(DATA SCIENCE) ●
- ELECTRONICS AND COMMUNICATION ENGINEERING ●
- CIVIL ENGINEERING ●
- MECHANICAL ENGINEERING ●

ADMISSION HELPLINE NOS.

**9605 500 216 | 7560 800 216**

☎ **0490 - 2401700/01/02, 94474 00216**



[stthomaskannur.ac.in](http://stthomaskannur.ac.in) 🌐

[stthomaskannur@gmail.com](mailto:stthomaskannur@gmail.com) ✉



## ABOUT STM

St Thomas Engineering College, Sivapuram, Mattannur was established by St Thomas Educational Society, Adoor with a view to impart high quality engineering education through systematic studies and efficient training. The college has a team of eminent faculty members and a disciplined atmosphere which help to promote a holistic approach to learning. There is a right balance of cognitive, conceptual, ethical, humane and spiritual growth as a whole. The college started its functioning in the academic year 2014-15 and is approved by the All India council for Technical Education and affiliated to APJ Abdul Kalam Technological University.

## MANAGEMENT

St. Thomas College of Engineering & Technology, Kannur is established by St. Thomas Educational Society, Adoor. Today St. Thomas Educational Society enjoys a comfortable space in the educational sector of Kerala through the establishment of innovative and path leading educational institutions such as St. Thomas College of Engineering & Technology, Chengannur and Travancore International School, Adoor. St. Thomas Educational Society has also been the foundation force behind the establishment of Caarmel Engineering College, Pathanamthitta, Caarmel Business School.

## A DECADE OF ACADEMIC DISTINCTION

### THE PINNACLE OF PERFORMANCE

◆ Ranked as **one of the Top 2 Private Engineering Colleges** across Kannur, Kasaragod, Calicut, and Wayanad for university results over the last nine years.

### STATE-LEVEL EXCELLENCE

◆ Consistently positioned among the **Top 50 Engineering Institutions in Kerala**, maintaining a rigorous standard of academic success year after year.

## WHY STM?

ELITE PLACEMENTS	INDUSTRY TRAINING	GLOBAL NETWORKS	MERIT SCHOLARSHIPS	STUDENT WELLNESS	VIBRANT CAMPUS
Over 150+ offers for the current batch with a primary focus on core engineering roles.	Integrated multi-year programs featuring technical workshops, NPTEL certifications, and mock interviews.	Active institutional memberships in prestigious professional bodies, including IEEE, ISTE, and CSI.	Financial support and specialized reward programs for students with exceptional academic records.	Dedicated professional counseling and mentorship to support emotional well-being and personal growth.	A dynamic, industry-aligned environment featuring technical fests and collaborative, hands-on projects.

# B-TECH PROGRAMS

## DEPARTMENT OF CIVIL ENGINEERING

◆ The Civil Engineering department at STM focuses on turning students into the architects of tomorrow's infrastructure. Our curriculum balances fundamental structural theories with modern construction management, ensuring students understand both the "how" and "why" of building.

The college provides state-of-the-art surveying and material testing labs where students get hands-on experience with industry-standard equipment. By studying here, you gain access to site visits and internships that bridge the gap between classroom blueprints and real-world execution.

◆ **Public Sector:** Assistant Engineer in PWD, KWA, or Irrigation Department; Technical Officers in ISRO/DRDO.

◆ **Private Sector:** Structural Designer, Site Engineer for major firms like L&T, or Project Manager in real estate development.

◆ **Global Careers:** Urban Planning Consultant or Sustainability Expert for international infrastructure projects.



## DEPARTMENT OF MECHANICAL ENGINEERING

◆ Mechanical Engineering at STM is designed for those who want to master the machines that drive the world, from automotive systems to robotics. We emphasize a "learning by doing" approach, utilizing our advanced machine shops and CAD/CAM labs to give students a competitive edge. The department fosters innovation through student-led projects in renewable energy and thermal systems. Our faculty mentors students to participate in national-level technical competitions, ensuring you graduate as a versatile engineer ready for the Industry 4.0 era.



◆ **Public Sector:** Executive Engineer in KSEB or Indian Railways; Scientist in BARC or Vikram Sarabhai Space Centre (VSSC).

◆ **Private Sector:** Design Engineer in Automotive (Tata/Mahindra), Production Manager in manufacturing plants, or HVAC specialist.

◆ **Entrepreneurship:** Leadership roles in the EV industry or starting specialized precision-tooling ventures.

## DEPARTMENT OF COMPUTER SCIENCE & ENGINEERING

◆ The CSE department at STM is the hub of digital innovation, focusing on software development, cybersecurity, and networking. We provide a high-speed, networked laboratory environment where students can master full-stack development and cloud computing. The college integrates industry-led certifications and workshops from partners like NPTEL and Spoken Tutorials directly into the learning path. By choosing CSE at STM, you are immersed in a culture of coding marathons and technical hackathons that prepare you for the fastest-growing sector in the global economy.



- ◆ **Public Sector:** IT Officer in Nationalized Banks; Systems Administrator for NIC or Keltron.
- ◆ **Private Sector:** Software Architect, Cybersecurity Analyst, or Cloud Engineer at MNCs like TCS, Infosys, and Google.
- ◆ **Innovation:** Full-stack Developer or Startup Founder in the burgeoning Kerala tech ecosystem.

## DEPARTMENT OF COMPUTER SCIENCE & ENGINEERING (DATA SCIENCE)

◆ As data becomes the new oil, our CSE (Data Science) specialization equips students with the analytical tools to predict trends and drive business decisions. This program goes beyond standard coding, diving deep into Machine Learning, Big Data analytics, and Statistical Modeling. STM provides the high-computational power and specialized software environments necessary to train complex AI models. Students benefit from guest lectures by industry experts, ensuring they stay updated on the latest breakthroughs in Artificial Intelligence.

- ◆ **Public Sector:** Data Scientist for Census/Government Planning units; Research Analyst for health and agriculture departments.
- ◆ **Private Sector:** Machine Learning Engineer, Business Intelligence Analyst, or AI Specialist in Fintech and E-commerce.
- ◆ **Future Tech:** Data Architect or AI Ethics Consultant for global tech giants.

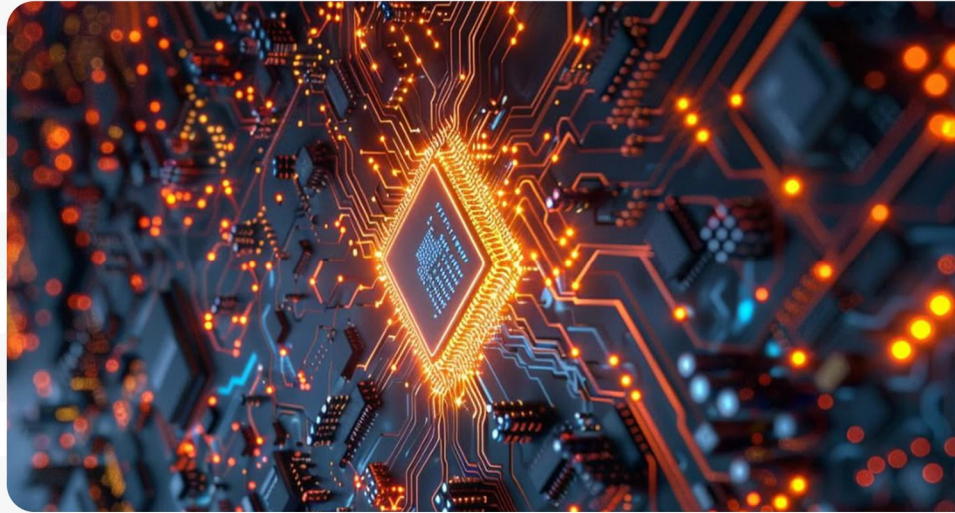


# DEPARTMENT OF ELECTRONICS AND COMMUNICATION ENGINEERING

◆ The ECE department at STM is where hardware meets intelligence, covering everything from VLSI design to wireless communication systems. We provide specialized labs for Microprocessors and Embedded Systems, allowing students to design and test their own electronic prototypes. The college supports ECE students through active professional chapters like IEEE, offering a platform to present research and connect with global experts. Our graduates are trained to handle the complexities of 5G, IoT, and satellite communications, making them indispensable in a connected world.

◆ **Public Sector:** Engineer in BSNL, Prasar Bharati, or Electronics Corporation of India (ECIL).

◆ **Private Sector:** Embedded Systems Developer, VLSI Design Engineer for semiconductor firms (Intel/Qualcomm), or Telecom Consultant.



## Empowering Excellence through Professional Synergy



An MoE Govt of India Initiative



Spoken Tutorials

To ensure our students are not just graduates, but Industry-Ready Engineers, STM integrates these high-value components into every branch:

◆ **Global Certification Programs:** We facilitate NPTEL and Swayam certifications, allowing students to earn credits from IITs while studying at STM.

◆ **Virtual Labs Integration:** In collaboration with the Ministry of Education, our students access cloud-based simulation environments to perform complex experiments 24/7.

◆ **Professional Society Chapters:** With active units of CSI, ISTE, and IGS, students participate in national design competitions and technical symposiums.

◆ **Soft Skills & Placement Training:** Dedicated hours for aptitude training, mock interviews, and communication workshops starting from the second year.

◆ **Social Responsibility (NSS):** Our National Service Scheme unit ensures students develop leadership skills through impactful community projects across Kannur.

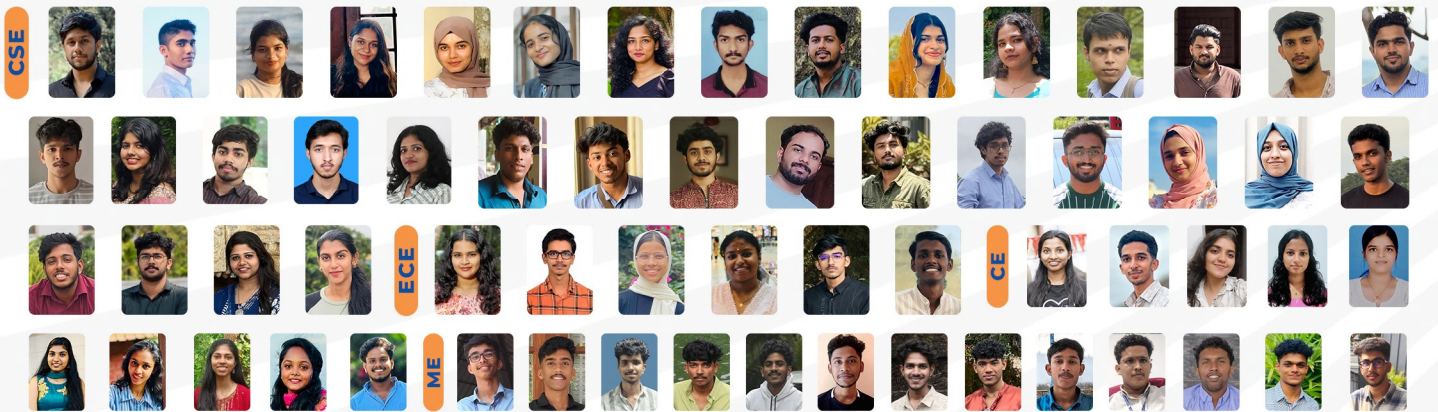
# Building Careers, Shaping Futures: Placements at STM

◆ At St. Thomas College of Engineering and Technology, our placement ecosystem transforms academic potential into professional excellence through a strategic focus on core engineering opportunities across all disciplines. Supported by a comprehensive training program including technical workshops and mock interviews, the current batch has already secured a record-breaking 150+ placement offers. This achievement underscores our commitment to ensuring every graduate is future-ready for both specialized core sectors and global corporations.

Marching  
Towards

150

Placements



## THANKS TO OUR RECRUITERS



# Moments @ STM

## XTASY - National Level Techno- Cultural Fest



## IGNITE - College Sports Fest

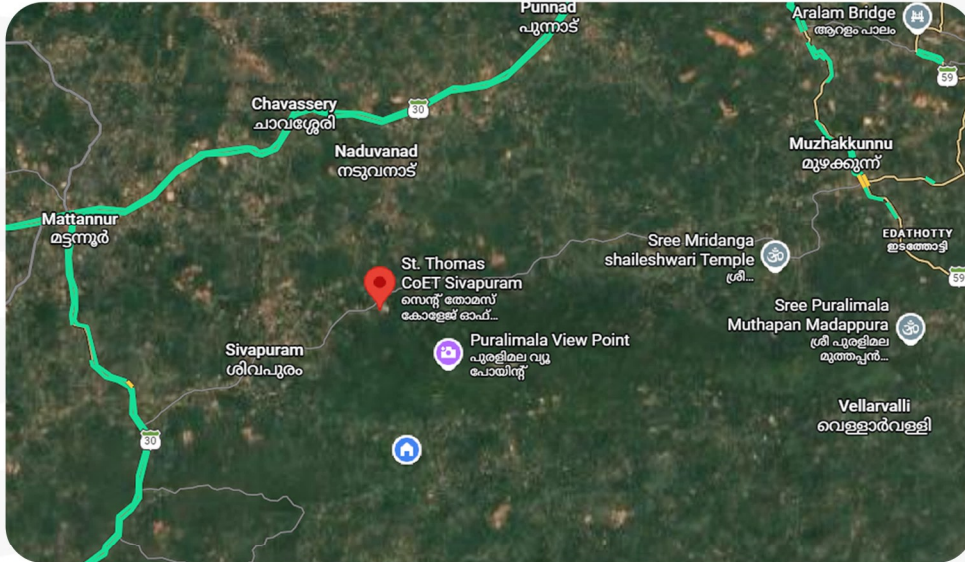


## Campus Highlights



## Location

◆ Far from the crampedness and congestion of the city, the campus environment is tranquil and in harmony with nature ensuring a highly conducive atmosphere for learning. The college is situated in Vellilode, Sivapuram, hardly 5 kms from Uruvachal, 7 kms from Mattanur, 16 kms from Kuthuparamba, 28 kms from Thalassery, 35 kms from Kannur, 12 kms from Iritty and is well connected to all major cities by road and railway networks.



### Nearest

- ◆ Bus Station: Mattanur 7 km
- ◆ Railway Station: Thalassery 25 km
- ◆ Airport: Kannur International Airport 8km

## Transportation Facilities

◆ Our fleet of 14 buses provides comprehensive coverage across the Kannur district, ensuring safe and punctual transport for all students and staff. We are committed to a reliable and efficient daily commute.

Bus No	Destination	Bus No	Destination
BUS NO 1	CHAKKARAKAL	BUS NO 8	MAYYIL
BUS NO 2	EDAKKAD	BUS NO 9	MAMBARAM
BUS NO 3	THOTTADA	BUS NO 10	IRITTY
BUS NO 4	KANNUR	BUS NO 11	MUNDAYAD
BUS NO 5	PANOR	BUS NO 12	PATTYAM
BUS NO 6	CHIRAKKARA	BUS NO 13	CHOCKLI
BUS NO 7	KADIRUR	BUS NO 14	THALASSERRY